

4-Post Lifts

Service

3.5-12t

SERVICE LIFTS



📷 Pictured: Q-1080



ALPHA
GARAGE EQUIPMENT

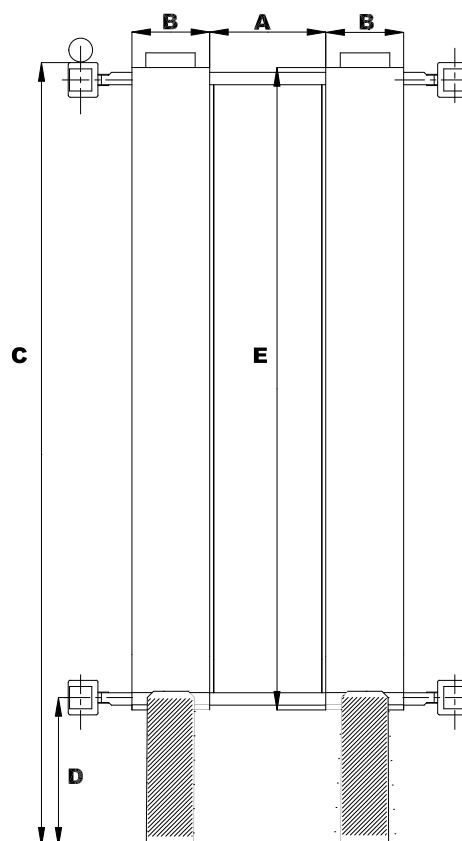
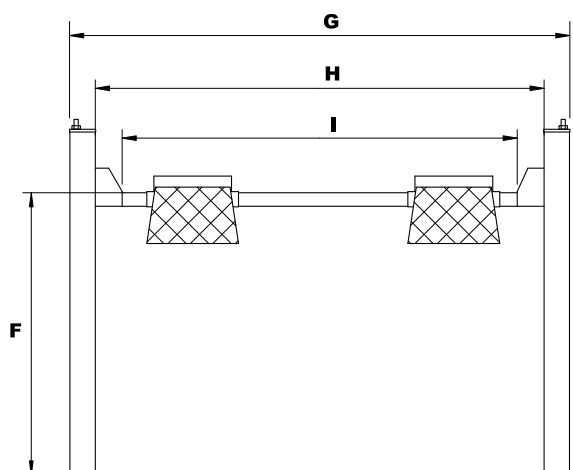
10 Little Balmer | Buckingham Industrial Park
Buckingham | MK18 1TF | United Kingdom

📞 +44 (0)1280 812200

✉️ info@alpha-ge.co.uk

Registration number: 11079047

- ✓ Wide range, from 3.5t to 12t capacity;
- ✓ Low voltage (24V) dead man's controls;
- ✓ Electrically operated locking mechanism;
- ✓ Automatic safety device in case of cable slack or sudden loss of hydraulic pressure;
- ✓ Adjustable platform to suit different vehicles;
- ✓ Recessed or surface mounted installation;
- ✓ Drive on reverse off or drive through configuration;
- ✓ Also available in single phase.



Dimensions (mm)

MODEL	CAPACITY	A	B	C	D	E	F	G	H	I
Q-1035-SERV	3.5t	1370/1530	500	5180	960	4300	120/1750	2820	2460	2030
Q-1040-SERV-LONG	4t	800/1090	565	5844	904	5000	165/1839	3210	2970	2450
Q-1040-SERV-ST	4t	710/1160	540	5344	904	4600	135/1830	3060	2820	2300
Q-1050-SERV	5t	735/1025	630	6350	1200	5200	170/1830	3210	2970	2450
Q-1060-SERV	6t	900/1200	650	7010	1150	6000	190/2000	3540	3180	2800
Q-1080-SERV	8t	900/1200	650	7210	1150	6000	190/2000	3660	3300	2920
Q-10120-SERV	12t	1100/1200	700	9350	1150	8430	190/1850	3790	3350	2605